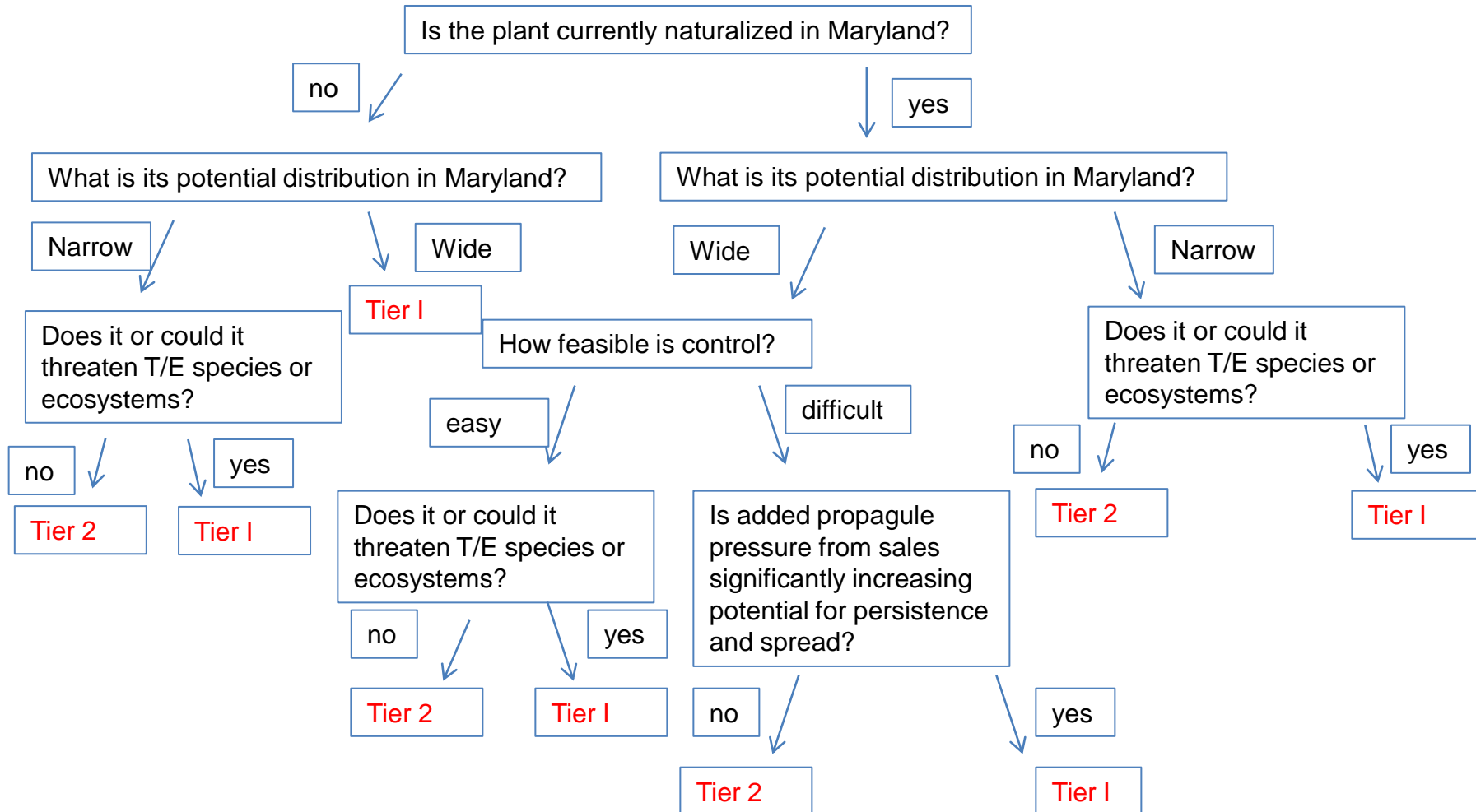


# Maryland Filter for WRA Model Risk Rating High Risk Invasive Plants



Last revised October 15, 2015

# Maryland Filter for WRA Model Risk Rating

## High Risk Invasive Plants

### Guidance for filter questions

Is the plant currently naturalized in Maryland? Answer is YES if,

- a. there are reports of occurrences outside of cultivation within the state.

What is the species potential distribution in Maryland? Potential distribution is WIDE if,

- a. species can potentially occupy part of three or more Maryland physiographic provinces OR
- b.  $\geq 50\%$  of any one province

Does it or could it threaten T/E species or ecosystems? Answer is YES if,

- a. the species is documented as occurring in an S1 or S2 community in Maryland OR
- b. The species occurs within a population or habitat of a threatened or endangered species or CITES listed species in Maryland, OR
- c. the species is documented as harming a threatened or endangered species in Maryland OR
- d. for a species not currently in Maryland its potential distribution would likely impact a T/E species or ecosystem (use data about the habitat preferences and impact).

How feasible is control? Control is considered DIFFICULT if,

- a. species displays herbicide resistance OR
- b. plants have a seedbank of at least 2 or more years OR
- c. plants have vegetative reproduction.

Is added propagule pressure from sales significantly increasing potential for persistence and spread?

Answer is YES if,

- a. species has been present in Maryland less than 20 years AND
- b. species is present at fewer than 20 sites in Maryland AND
- c. answers to ANY of the following questions in the WRA are yes: seed/spore production, propagule dispersal, (ES 14, 15, or 16) OR the answer to question ES-17 on dispersal methods is  $>2$ .