



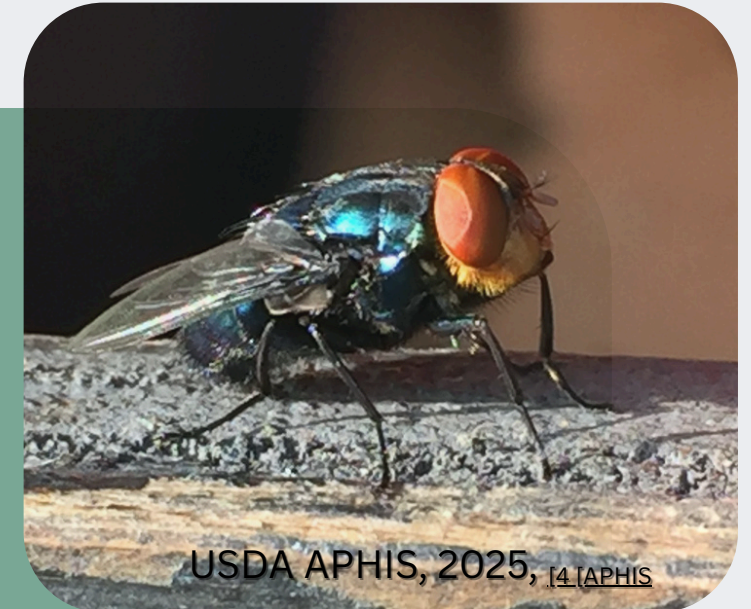
# NWS- New World Screwworm in Livestock

STOP THE SPREAD: IDENTIFY AND REPORT NEW WORLD  
SCREWWORM IN LIVESTOCK

Spot It.  
ID It.

## ADULT SCREWWORM FLY

Size similar to a common housefly  
Bright red eyes  
Metallic blue body  
Three distinct black stripes on its back



USDA APHIS, 2025, 141APHIS

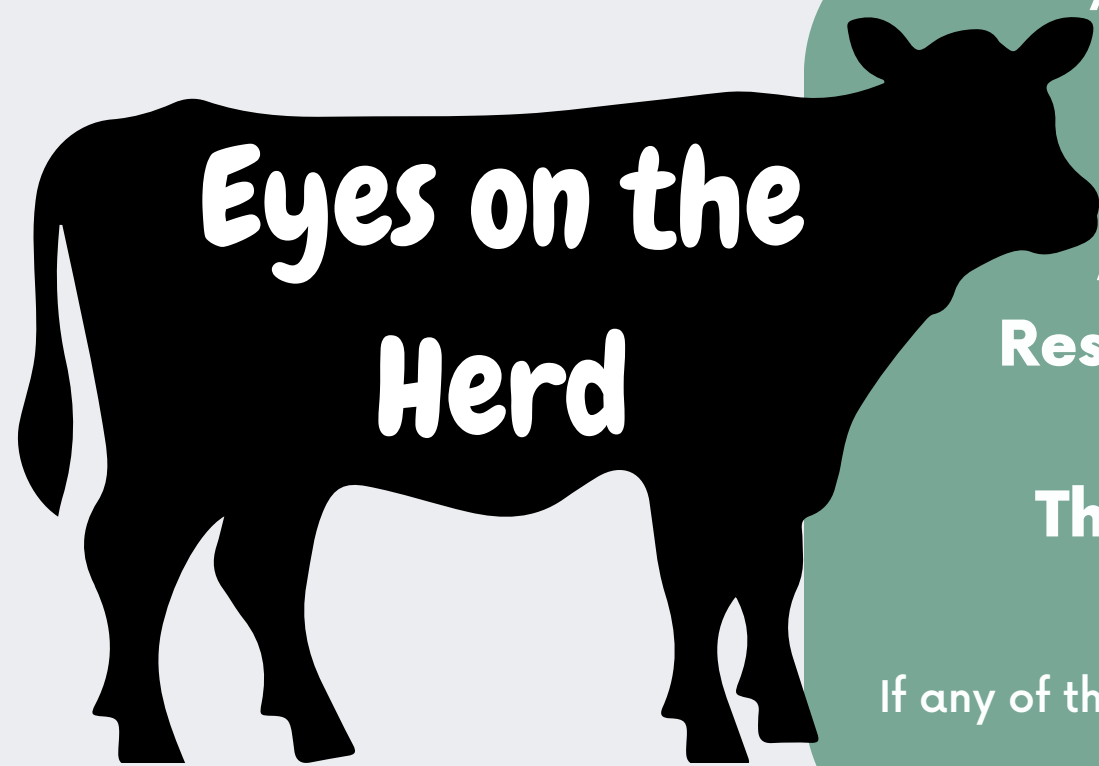
## LARVAE

Size: 6.5 to 17 mm long  
Recognizable by distinct dark  
bands around their bodies<sup>1</sup>



USDA APHIS, 2025, 141APHIS

For detailed identification visuals, see Reference [1] [4].



Early detection is crucial for halting the progression of screwworm infections.

Keep an eye out for:

A distinct foul or decaying odor coming from wounds  
Restlessness or signs of irritation, such as shaking the head,  
excessive rubbing, or licking  
The presence of fly larvae (maggots) visible in wounds or  
open areas [APHIS](#)<sup>2</sup>

If any of these symptoms appear, immediately isolate the affected animal and contact your local Veterinarian and the Maryland State Veterinarian to prevent wider spread.

See Reference [2] for full details on symptoms and early signs.



USDA APHIS, 2025, 141APHIS

**Biosecurity:  
Your First  
Defense**

## Prevention Starts With You

It is vital to take proactive steps to protect your animals from New World Screwworm. Even a small wound, such as a tick bite, can become a target for screwworm flies to lay their eggs.

## What You Can Do

- Inspect all wounds regularly for signs of fly eggs or larvae
- Clean and treat wounds immediately, and cover them to prevent egg-laying
- Practice good fly control using repellents, traps, and insecticide as recommended
- Maintain a clean environment to reduce fly breeding grounds
- Quarantine all new arrivals before introducing them to the herd

**New World Screwworm is a Reportable Disease in Maryland**  
**If you suspect a case, contact state animal health officials Immediately.**

**Phone: (410) 841-5810**

**After Hours: (410) 841-5971**

**Email: [animalhealth.mda@maryland.gov](mailto:animalhealth.mda@maryland.gov)**

[1] Centers for Disease Control and Prevention (CDC). (2024). New World Screwworm Bench Aid.

[2] U.S. Department of Agriculture, Animal and Plant Health Inspection Service (USDA APHIS). (2025). New World Screwworm.

[3] U.S. Department of Agriculture, Animal and Plant Health Inspection Service (USDA APHIS). (April 2025). New World Screwworm: Be Aware and Prepare (for Veterinarians). Retrieved from [USDA APHIS factsheet for private veterinarians] — information includes guidance on inspection, wound treatment, sample collection, and reporting.

[4] U.S. Department of Agriculture, Animal and Plant Health Inspection Service (USDA APHIS). New World Screwworm Photo Gallery. Last modified July 10, 2025. Available at: USDA APHIS photo gallery for New World screwworm life stages and infestations