

SPOT THE SYMPTOMS

VASCULAR STREAK DIEBACK

VSD is an emerging
issue impacting the
nursery industry.

This disorder is likely part of a disease complex.

**VSD is impacting over 30 genera of plants!
NURSERY HOSTS INCLUDE:**

Dogwood (*Cornus* spp.)

Crape Myrtle (*Lagerstroemia* sp.)

Maple (*Acer* spp.)

Oak (*Quercus* spp.)

Redbud (*Cercis* spp.)

Tulip poplar (*Liriodendron tulipifera*)

Ginkgo (*Ginkgo biloba*)

Magnolia (*Magnolia* spp.)

WHAT ARE THE SYMPTOMS?

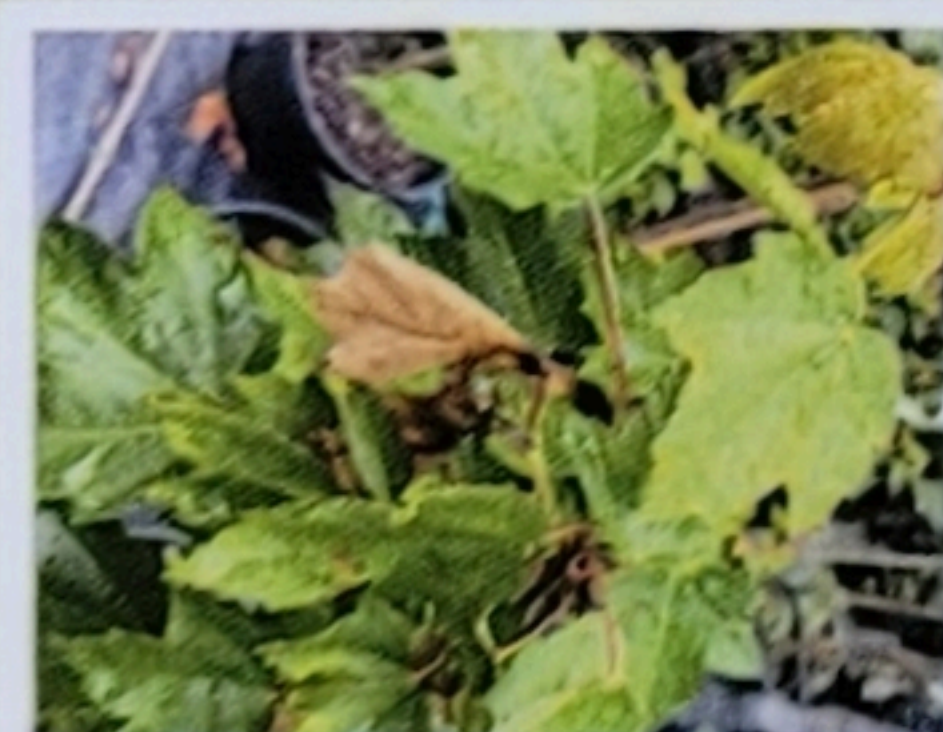
Vascular Streaking

Vascular streaking can vary based on the host.



TIP DIEBACK

Dieback can occur top the upper limbs
or on side limbs.



MOUSE EAR GROWTH



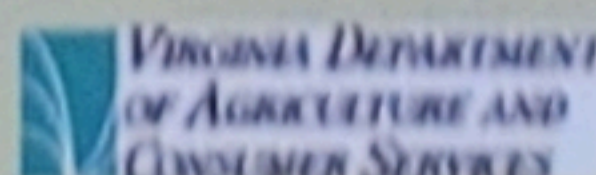
CHLOROSIS



Use a combination of cultural and preventative chemical
control as part of an Integrated Pest Management plan to
reduce the risk of Vascular Streak Dieback.

SUSPECT VSD?

CONTACT
YOUR STATE DEPARTMENT OF
AGRICULTURE



Virginia Tech Pest
Update

